

公差				
尺寸	A	B	C	D
0~5	±0.07	±0.10	±0.15	±0.20
>5~20	±0.10	±0.15	±0.20	±0.30
>20~50	±0.15	±0.20	±0.30	±0.40
>50~100	±0.20	±0.30	±0.40	±0.60
>100	±0.30	±0.50	±0.60	±1.00
角度	±20'	±40'	±90'	±180'

序号	修改记录	日期	设计	批准

1.material: Contacts--brass, T=0.4mm
 Insulator--Glass Filled PBT, 94-V0;

2.terminal finish: Tin plated;

3.removed burrs and sharp edge.

4.(medium) (small) (MINI) (extra small)

three in one universal fuse plug holder

5.Suitable rated current: 30A@500VAC

6.Insertion and extraction force: 1Kg Min

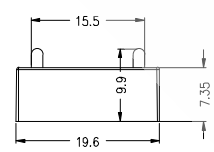
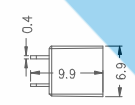
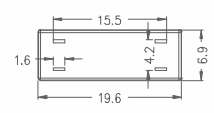
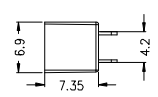
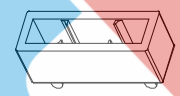
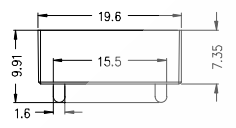
7.Dielectric Strength: Min.AC1000V

8.Contact Resistance: Max 50mΩ.

9.Contact Resistance: Max 50mΩ

10.Insulation Resistance At 500V DC: 100MΩ

11.product model GF-C40(Brand GFEFUSE Gongfu)



TOLERANCE	吕斌	MATERIAL	型号: GF-C40
数量	审核	表面处理	名称
QUANTITY	吕斌	FINISHED	FUSE HOLDER
	设计	比例	料号
单位	吕斌	SCALE	GF20170603
mm		东莞市贡福电子有限公司	